

Running NBL Team of 8 matches with Bridgemates

1 INTRODUCTION

The NBL refers to the Inter County Northern Bridge League for Teams of 8.
The program TeamsScorer may be used and is downloaded from the web site at:

<http://homepages.nildram.co.uk/~jasmith>

To utilize Bridgemate scoring you must download the Bridgemate Pro Control firmware from the Web Site at <http://www.bridgematescoring.com> This firmware should be installed at C:\Program Files\Bridgemate Pro\Bmpro.exe

Team of 8 events are run by combining 2 matching team-of-4 sections into a team-of-8 for each session. Depending on the number of teams and boards, the event can be run as a one or two session event. The recommended movements for the Northern Bridge League (NBL) are all available as System Movements and are all run as two session events.

- 4 Teams: Two Sessions of 3 x 8 (or 7) board head to head matches with immediate scoring.
3 Sets of 24 boards for each half.
- 5 Teams: Sessions of 4 x 6 board rounds. Two sets of Boards 1-30 needed.
American Whist Movements allow part match scoring with all teams at half time.
- 6 Teams: Sessions of 3 x 8 board and 2 x 8 board rounds. Sets of Boards 1-24 and 1-16 needed. Howell movement allowing score every round.
- 7 Teams: Sessions of 6 x 4 and 6 x 3 board rounds. Sets of Boards 1-28 and 1-21 needed.
American Whist movements allow part match scoring with all teams at half time.
- 8 Teams: Sessions of 4 x 6 and 3 x 6 board rounds. Two sets of Boards 1-24 boards needed.
Stagger movement allows scoring with 4 teams at half time.
- 9 Teams: Sessions of 8 x 3 and 8 x 2 board rounds. Sets of Boards 1-27 and 1-18 needed.
American Whist movements allow part match scoring with all teams at half time.

For NBL Teams of 8 Scoring, all the scores on a board are added together and the resulting value is converted to IMPs. The Total Imps against each Teams will be converted to VPs on the normal EBU Aggregate Teams of 8 Scale.

For the purposes of this document, assume 5 teams:

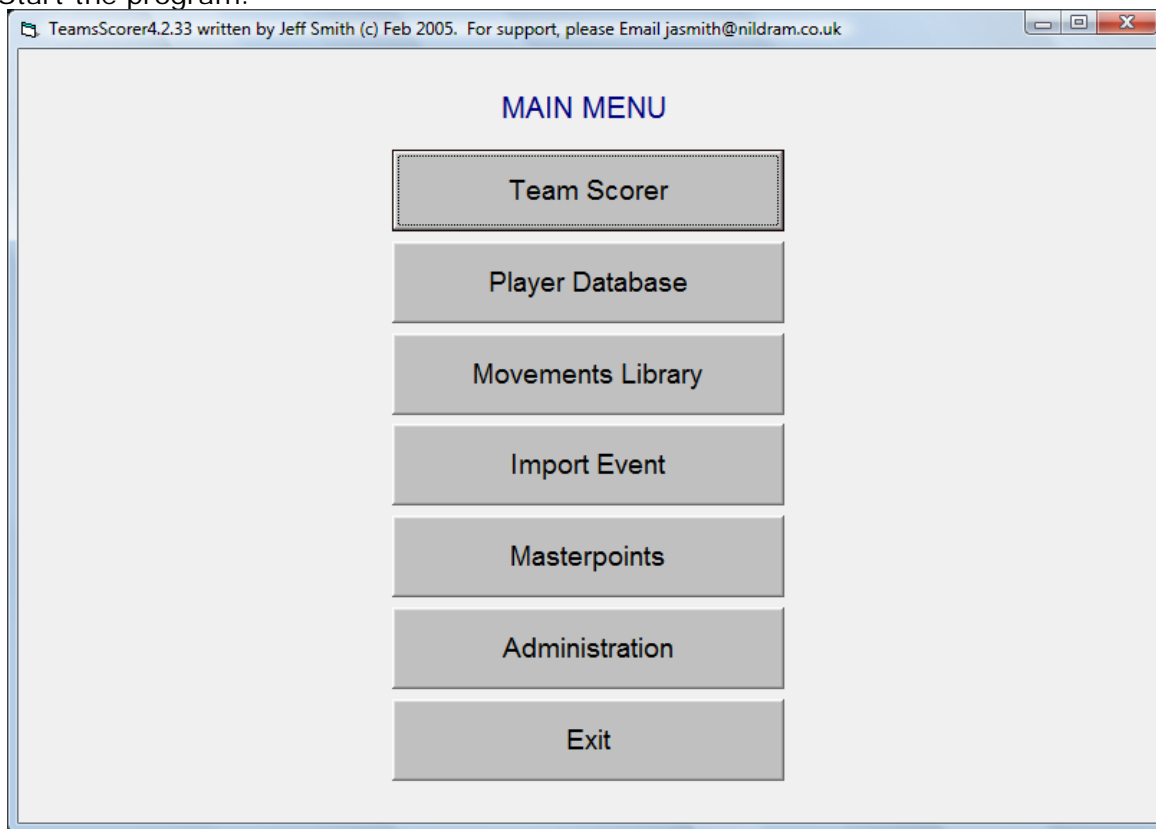
Section A Bridgemates are numbered A1 to A5.
Section B Bridgemates are numbered B1 to B5.

To change the section letter or table number of a BridgeMate, use the TD-key at the beginning of the session whilst the BridgeMate screen shows BRIDGEMATE PRO V2.0a EN.

Insert TD-key to adjust the section letter and / or table number.
Press +/- to adjust the group letter and click "OK".
Press Cancel to delete the table number, enter the new table number and click "OK".
Remove TD-key. (Leave the Channel as "0")

The players start at their Home Table as Teams of 4 in both sections A and B and play in the **same** direction throughout. The EW pairs switch Sections for Session 2.

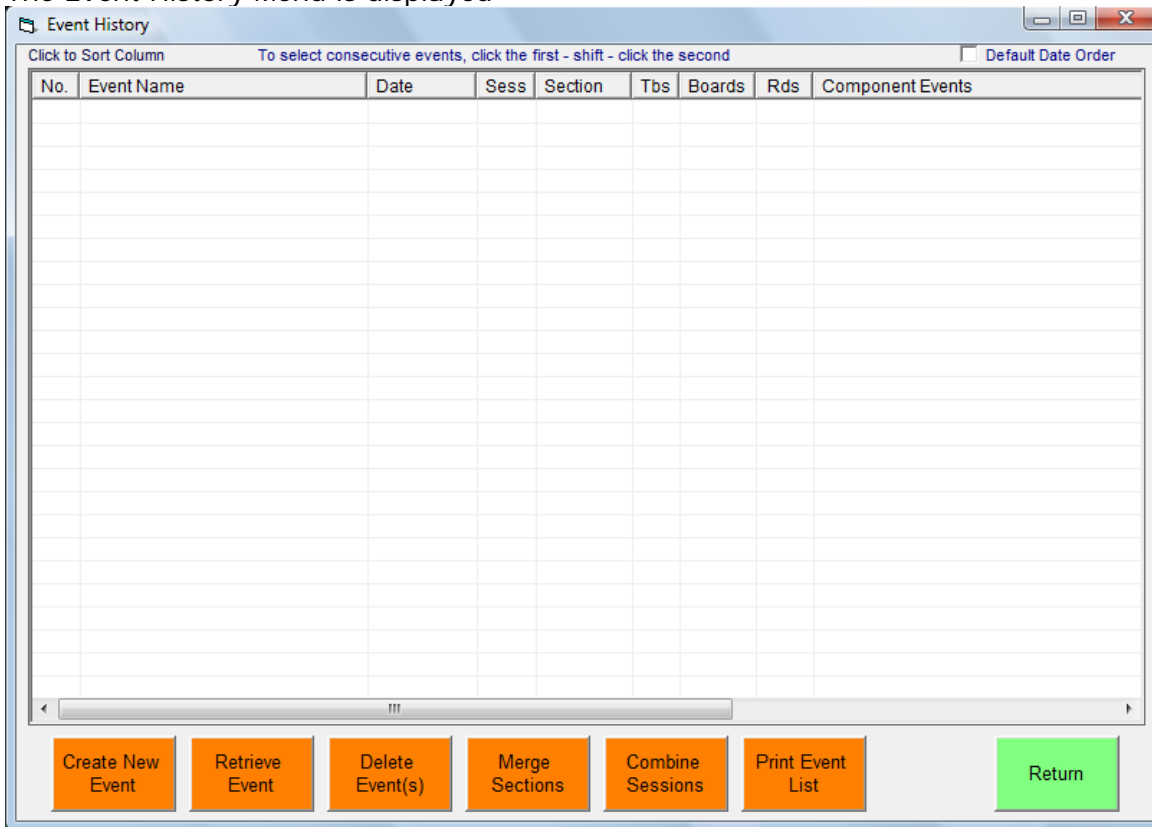
Start the program.



Click *Teams Scorer*

2 SET UP MULTISESSION EVENT / DETAILS / MOVEMENT

The Event History Menu is displayed



Now set up 4 separate events with the supplied NBL movements:

Session 1 Section A – 5 Tables, 4 x 6 board rounds

Session 1 Section B – 5 Tables, 4 x 6 board rounds

Session 2 Section A – 5 Tables, 4 x 6 board rounds

Session 2 Section B – 5 Tables, 4 x 6 board rounds

Combine these 4 events into a MultiSession event which is used to control the whole event.

The mechanism for doing this is explained in the next few pages.

2.1 Set up Event for Session 1, Section Red

Event History > Create New Event

Event 1

Club/Event Details Scoring Masterpoints BridgeWebs Import Deal Names

Club Details

Country (NBO) England
Club Name Manchester
Club NBO No 207672
Contact Name Jeffrey Smith
Contact Phone 01617023773
Contact Email jasmith@nildram.co.uk
Web Site www.bridgewebs.com/jeff

Event Details

Event Name NBL A
Date 21 Apr 2011
Session 1
Section Red
Director Jeff Smith
Scorer Jeff Smith
P2P Charged Yes
NGS Rated Yes

Cancel OK

Enter Event Details: Session 1 Section = Red, Event Name = NBL (+ ClubName, TD, Date etc)

Scoring

Event 1

Club/Event Details Scoring Masterpoints BridgeWebs Import Deal Names

Scoring Method (only relevant for Control Event)

Method
Team of 4: Imps converted to VPs unless No Convert option set below

VP Scale
EBU Scale

Butler Drops 12.5% Max Cap 0 Min Cap 0 0=Unused. Capping is applicable to Imps/XImps Scoring. The Caps are the Max and Min Imps value attainable in a single match.

Boards per Match
Calculated from Movement

No Conversion from Imps->VP

Sessions for Scoring across 2 Parallel Sections
 1

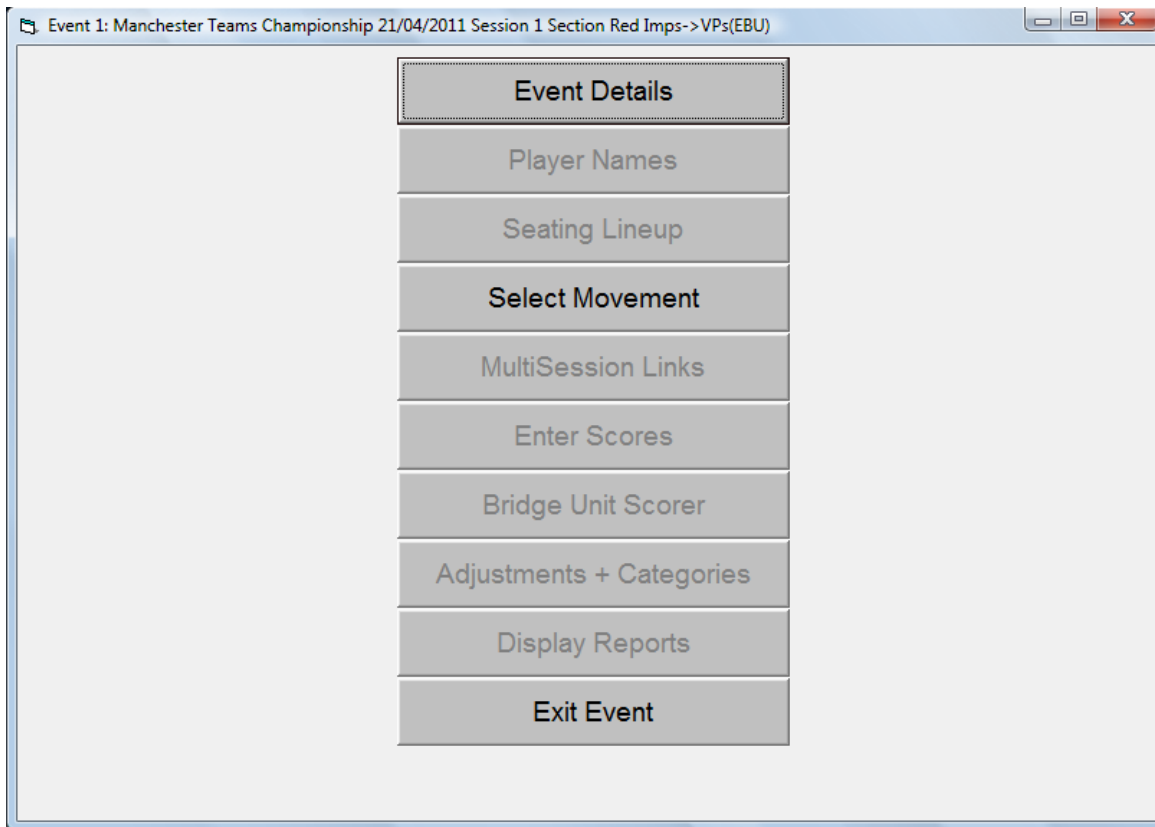
Display VP Scale

Cancel OK

The Scoring is set as Team of 4 at this stage. It will be set to Teams of 8 after the separate Section movements have been combined (see later)

Click **OK**

You are returned to the Event Menu



Event Menu > Select Movement

Event 1 Manchester Teams Championship 21/04/2011 Section Red Session 1 Imps->VPs(EBU)

Preset Movements

Tbs	Bds	Set	Rds	Sys	Ref	Description: Standard Move=EW down 2 taking Boards down 1 Table (Double Move when needed)
5					M128	American Whist- Tables InLine.EW start down 2
5					M129	ScoreBreak- Tables in line. User Defined Start
5	50	10	4	Y		Half Time Score skip first half
5	30	6	4	Y		NBL Sess 1&2 Bds 1-30 4 x 6 Bd Rounds
5	50	10	4	Y		Half Time Score skip first half

Setup

Number of Teams: 5
 Number of Boards: 30
 Lowest Board: 1
 Number of Rounds: 4

General Options

Boards moved down 1 at start
 EW down 2 at start, down 1 after break
 Reverse Moves (=Up 2 Tables)

Stagger Move default: EW down 1 at start, down 2 after break (Long Stanza First)

Movements

All
 Supplied
 Club

Describe Movement Show Table Cards Print Table Cards Cancel OK

Number of Teams = 5

Movement = System supplied NBL Session 1 Movement

The default is 4 x 6 board rounds. Change Number of Boards to 25 for 4 x 5 board rounds etc

Click **OK**

Click **Exit Event**

The other Events are set similarly.

Set up Event for Session 1 Section Blue

Event History > Create New Event

Event Details Event Name = NBL (+ ClubName, TD, Date etc)
 Session 1 Section = Blue
 The Scoring set to Teams of 4 Imps->VPs(overridden in Multi Event)

OK

Select Movement Teams = 5
 NBL Session 1 Movement

OK

Exit Event

Set up Event for Session 2 Section Red

Event History > Create New Event

Event Details Event Name = NBL (+ ClubName, TD, Date etc)
 Session 2 Section = Red
 Scoring set to Teams of 4 Imps->VPs (overridden in Multi Event)

OK

Select Movement Teams = 5
 NBL Session 2 Movement

OK

Exit Event

Set up Event for Session 2 Section Blue

Event History > Create New Event

Event Details Event Name = NBL (+ ClubName, TD, Date etc)
 Session 2 Section = Blue
 Scoring set to Teams of 4 Imps->VPs (overridden in Multi Event)

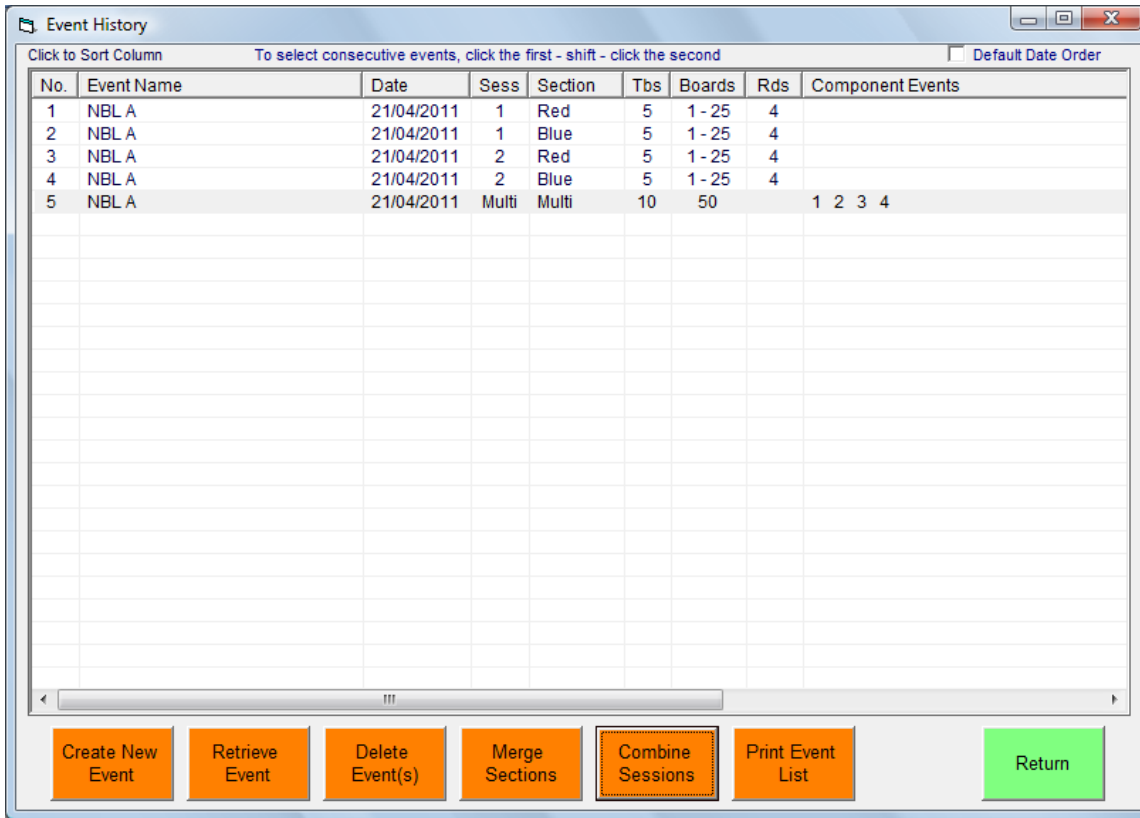
OK

Select Movement Teams = 5
 NBL Session 2 Movement

OK

Exit Event

Event Menu > Exit Event>Return (to Event History)



The screenshot shows a window titled "Event History" with a table of events and a toolbar. The table has columns for No., Event Name, Date, Sess, Section, Tbs, Boards, Rds, and Component Events. The toolbar contains buttons for "Create New Event", "Retrieve Event", "Delete Event(s)", "Merge Sections", "Combine Sessions", "Print Event List", and "Return".

No.	Event Name	Date	Sess	Section	Tbs	Boards	Rds	Component Events
1	NBL A	21/04/2011	1	Red	5	1 - 25	4	
2	NBL A	21/04/2011	1	Blue	5	1 - 25	4	
3	NBL A	21/04/2011	2	Red	5	1 - 25	4	
4	NBL A	21/04/2011	2	Blue	5	1 - 25	4	
5	NBL A	21/04/2011	Multi	Multi	10	50		1 2 3 4

Select the four newly created Events:

Combine Sessions

This creates Multisession Event 5 which will be used to control the remainder of the Event.

Event History > Retrieve Event > Event Details > Scoring

Event 5 Manchester NBL A 21/04/2011 MultiSession Imps->VPs(EBU)

Club/Event Details Scoring Masterpoints BridgeWebs Import Deal Names

Scoring Method (only relevant for Control Event)

Method
Team of 8: Aggregate all 4 scores together before converting to Imps(->VPs)

VP Scale
EBU Scale

Butler Drops Max Cap Min Cap
12.5% 0 0 0=Unused. Capping is applicable to Imps/XImps Scoring. The Caps are the Max and Min Imps value attainable in a single match.

Boards per Match
Calculated from Movement

No Conversion from Imps->VP

Matches always completed within a single Session

Sessions for Scoring across 2 Parallel Sections
 1 2

Display VP Scale

Cancel OK

Scoring Method = "Team of 8: Aggregate all 4 scores together before converting to Imps(->VPs)"
Leave "Matches always assumed complete in a Session..." unticked

> Names

Event 5: Manchester NBL A 21/04/2011 MultiSession Team-of-8 Agg->VPs(EBU)

Club/Event Details Scoring Masterpoints BridgeWebs Import Deal Names

Use Team Names

Players per Team
8

Cancel OK

Set Use Team Names and Players per Team = 8.
OK

3 NAMES

Event Menu > Names

Event 5: Manchester NBL A 21/04/2011 MultiSession Team-of-8 Agg->VPs(EBU)

Session: 1 Section: Red

Treat Numeric Input as NBO Numbers (rather than ID)
 Convert Name to Proper Case

Yellow = Visitor (Not found in Player Database)
 Green = Not Club Member (in Player Database)

No	TEAMNAME	PlayerN	PlayerS	PlayerE	PlayerW	Forname	Surname
1	north east	Ian Rankin	Mike Stanbury	Frank Springett	Janet Springett	Jack	Aaron
		Gill Gold	Ray Green	Fred Robinson	Alan Lester	Rita	Aaronson
2	lancashire	Austin Barnes	Stuart Norris	Bill Alston	Colin Mitchell	Jenny	Algar
		Paul Williams	Hilda Williams	Stephen Haley	Mike Nicholson	Ross	Allen
3	manchester	Dave Barton	Alan Jones	Rhon Goldenfield	Tracy Capal	Carol	Alligan
		Michelle Brunner	John Holland	Alan Nelson	Kath Nelson	Valerie	Anderson
4	merseyside	Chris Pope	Andrew Protheroe	Peter Hall	Dabiel Miller	Ray	Ashleigh
		Alan Stephenson	Stuart Matthews	Dave Keen	Jean Keen	Trish	Avery
5	yorkshire	Stuart Davies	Alan Jarvis	Gill Copeland	George Bak	Sue	Bailey
		Nick Woolven	Martin Edge	Robin Jepson	Alan Brosjill	John	Baker
						A	Bamber
						Vernon	Barber
						Carolyn	Barker
						William	Barker
						Mike	Barlow
						Linda	Barnett
						S	Barwick
						Paul	Batstone
						Mervyn	Beecham
						Rosemary	Beecham
						Joyce	Bell

With NBO Number

Clear Names Display Names Player Database Import Names from csv file Add Visitors to Player Database Cancel OK

A B C D E F G H I
 J K L M N O P Q R
 S T U V W X Y Z All

At a convenient point, Team and Player names may be entered. The Preferred method of Names Entry is via Bridgemates (see later). This can however be done manually by:

Event Menu > Names

Session 1 Section Red

Set 'Treat Numeric Input as NBO numbers' so that EBU numbers may be entered. (This uses a file set previously by using the **Download EBU Member List** button on the *Player Database>Admin* screen).

Enter the TeamName AND THE 8 PLAYER SQUAD in the order NS A, NS B, EW A, EW B pairs into Session 1 Section Red.

Click **OK**

The Player Names will be copied from Section Red to Blue when OK (or Section) is clicked
 When you set the Multisession Links (later), the Names will be copied from Session 1 to Session 2.

5 BRIDGEMATES

Run Session 1

Event Menu > Bridge Unit Scorer

BRIDGE UNIT SCORER (BS) Session Section

C	Section	Rd	Exp	Rx	1	2	3	4	5	6	7	8	9	10	11	12	13	14	15	16	17	18	19	20	21
A	Red	1	25	0	0	0	0	0	0																
A	Red	2	25	0	0	0	0	0	0																
A	Red	3	25	0	0	0	0	0	0																
A	Red	4	25	0	0	0	0	0	0																
B	Blue	1	25	0	0	0	0	0	0																
B	Blue	2	25	0	0	0	0	0	0																
B	Blue	3	25	0	0	0	0	0	0																
B	Blue	4	25	0	0	0	0	0	0																
C	Red	1	25	0	0	0	0	0	0																
C	Red	2	25	0	0	0	0	0	0																
C	Red	3	25	0	0	0	0	0	0																
C	Red	4	25	0	0	0	0	0	0																
D	Blue	1	25	0	0	0	0	0	0																
D	Blue	2	25	0	0	0	0	0	0																
D	Blue	3	25	0	0	0	0	0	0																
D	Blue	4	25	0	0	0	0	0	0																

Update From Round Reset Server for Launch BS

Create Database Update Database Launch BS Start Receiving Read All Results Restart Return

Set Session=1

Create Database

(Confirm you wish to create it if necessary)

Set Bridgemate Options for Teams Scoring

> Set BS Options

Event 5: Manchester NBL A 21/04/2011 MultiSession Team-of-8 Agg->VPs(EBU)

BS DATABASE SETTINGS

Bridgemate	Bridgemate II
Results <input type="checkbox"/> Show Previous Results Frequency list, 6 lines, 1 score column <input checked="" type="checkbox"/> Show Own Result <input checked="" type="checkbox"/> Repeat Results Maximum results to show: Unlimited <input type="checkbox"/> Show percentage of own result <input type="checkbox"/> Group sections for results	Interval settings Autopower-off period: 20 seconds Verification Time: 2 seconds
Behaviour Show score points from perspective of: <input checked="" type="radio"/> North - South <input type="radio"/> Declarer Enter results as: Up/Down Tricks <input checked="" type="checkbox"/> Show Pair Number At Round Info <input type="checkbox"/> Intermediate Transmission Of Contract <input type="checkbox"/> Board Order Verification	Contract Show contracts using: <input checked="" type="radio"/> Symbols <input type="radio"/> Characters
	Member Numbers / Lead Card <input type="checkbox"/> Lead Card <input checked="" type="checkbox"/> NBO Numbers <input type="checkbox"/> Blank entry not allowed <input type="checkbox"/> Entry at Home Table (Teams only) Validate number using rules of: No validation
	Shutdown <input type="checkbox"/> AutoShutdown

Buttons: Pre-Register Names, Set Teams Defaults, Update Settings when BS running, Cancel, OK

Set Teams Default

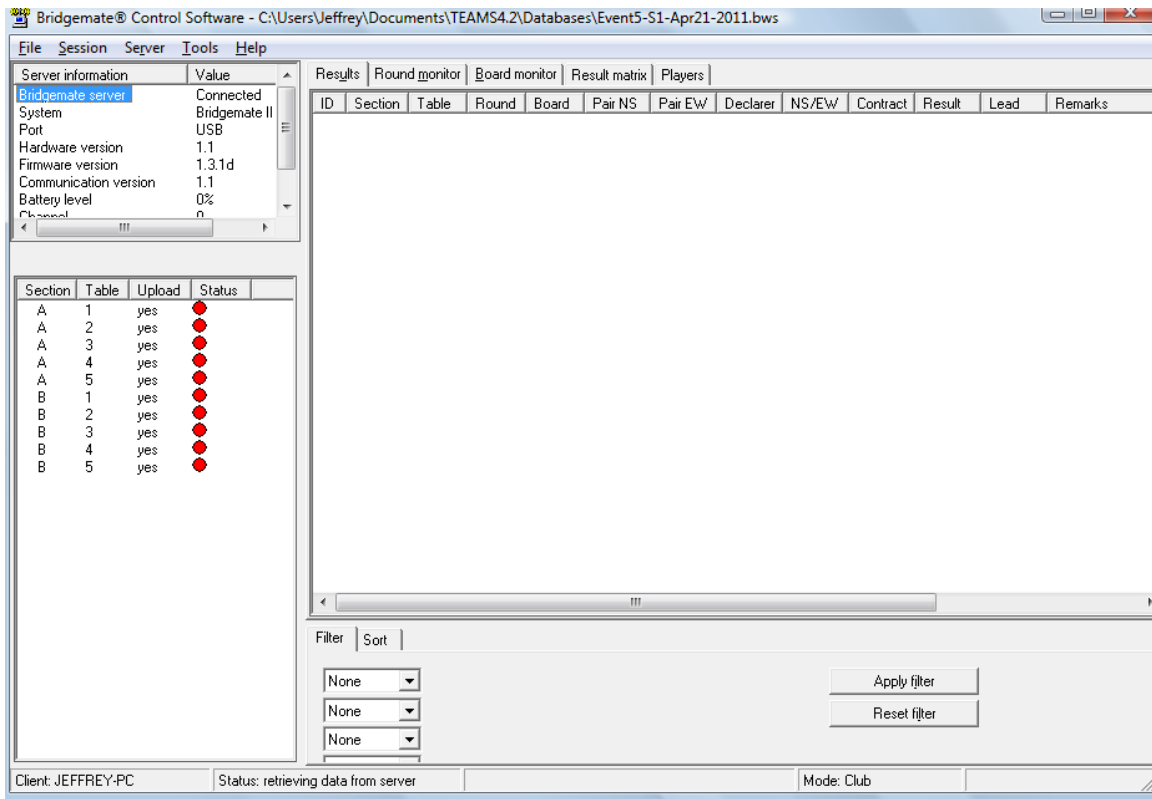
Click **OK**

If you want the players to enter their EBU numbers (or 0 if unknown) on the Bridgemates, tick the NBO Numbers box. Leave the Entry at Home Table unticked so that the numbers are entered only after the move for the first round.

TeamsScorer will decode the numbers accordingly (assuming the EBU Database has been previously downloaded on the PC using the 'Download EBU Member List' button on the Player Database > Administration screen).

Launch BMPro

This should be launched with Reset Server ticked to clear out any previous Server Data.



The Bridgemate Control Software Program will be started and you should see the 10 Tables being added as clients to its Server.

Minimise the Display.

Start Receiving

Event 5: Manchester NBL A 21/04/2011 MultiSession Team-of-8 Agg->VPs(EBU)

Movement Database Receiving Results BRIDGE UNIT SCORER (BS) Session: 1 Section: All

C:\Users\Jeffrey\Documents\TEAMS4.2\Databases\Event5-S1-Apr21-2011.bws

Results		Set BS Options			Reports							Round Data					Missing Results					BS Setup				
C	Section	Rd	Exp	Rx	1	2	3	4	5	6	7	8	9	10	11	12	13	14	15	16	17	18	19	20	21	
A	Red	1	25	1	1	0	0	0	0																	
A	Red	2	25	0	0	0	0	0	0																	
A	Red	3	25	0	0	0	0	0	0																	
A	Red	4	25	0	0	0	0	0	0																	
B	Blue	1	25	0	0	0	0	0	0																	
B	Blue	2	25	0	0	0	0	0	0																	
B	Blue	3	25	0	0	0	0	0	0																	
B	Blue	4	25	0	0	0	0	0	0																	

Update From Round: 2 Reset Server for Launch BS

The Bridgemate screen monitors when a result is received from a Table. Members Numbers will be read automatically when they are available.

You can set the option on the Reports Tab to 'Show Continuous Rank Display' if you like.

6 REPORTS

Event Menu > Display Reports

Event 5: Manchester NBL A 21/04/2011 MultiSession Team-of-8 Agg->VPs(EBU)

Reports | **Internet Functions** | **Printer Settings**

From Session
All

Print Menu

- Ranks
- Team Scores
- Score Cards
- Travellers
- Cross Table
- Start Lineup
- Movement
- History
- Club Print

Print Options

Note
[Text Area]

Category
[Dropdown]

- Rank + Masterpoints(A)
- Ranks + Session Totals
- Ranks + Win/Draws

Output To

- Notepad
- CSV File
- XLS File
- Web Table
- Web Text

Butler Scoring

[Search Input]

Find Player | Display On Screen | Printer Preview | Send to Printer | Scroll Report | Return to Event Menu

At the end of Session 1, show the current Ranks etc. The most useful prints are RANKS, TEAM SCORES (for Team Captain) and Scorecards (for players). Use 'Send to Printer' to send the results to Line Printer. The reports should be automatically aligned/paginated in the Line Printer output.

Return to Event Menu

Return to Event History

Run Session 2

This is similar to Run Session 1 except that after entering the *Bridge Unit Scorer* menu, you **MUST** remember to set Session = 2 before *Create Database*, Launch BS etc

(Be careful NOT to set Session 1 again as you would overwrite first session results!!!)

